

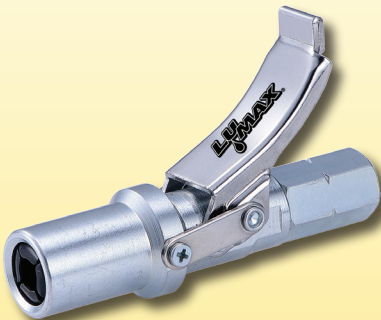
LX-4851

Counter Display Kit includes:

- Heavy-Duty Metal Counter Display
- 2 pcs. Grease Hoses with Spring-Guard
- 1 Coupler each Model Quick-Release Grease Coupler for Demo
- 2 pcs. Display Hooks
- 20 pcs. of each Coupler (LX-1403 and LX-1403-XL)
(5 of each LX-1403 and LX-1403-XL for Display and 15 of each Model for Replenishment)



Heavy-Duty Quick-Release Grease Couplers



LX-1403



LX-1403-XL

Ideal for Use in:
Agricultural
Aviation
Automotive
Construction
Fleet
Heavy Equipment
Industrial
Municipality
Marine, Mining and Trucking



Heavy-Duty Quick-Release Grease Couplers Display Kit



Lumax® Eye-Appealing Packaging;
puts the World's Highest Pressure
Rated, Heavy-Duty Quick-Release
Grease Couplers within Easy Reach
of Your Customers.

Which means; when you Display
an Attractive Lumax® Counter
Display, you're Sure to
Ring-Up More Sales!

"Pros";
Choose Lumax®



Lumax®
USA

T: 704-940-6988 / 844-660-6876
F: 704-940-6993
Lumax.com

**World's
Highest
Pressure
Rating!**

Working Pressure:

15,000 PSI

Burst Pressure:

22,000 PSI

LX-1403



- Innovative Design enables Quick-Release Coupler to firmly latch onto the Grease Fitting, enabling Hands-Free Greasing.
- Integrated Non-Return Valve enables unit to be Disconnected Easily at Pressures up to 15,000 PSI (1034 Bar).
- High Quality Tool Steel.
- Hardened 4-Jaws withstands High Pressure without Deformation.
- Integrated 1/8" NPT Connection. Suitable for Use on most Hand, Battery Powered or Air Operated Grease Guns and Bulk Grease Pumps.
- Multi-Year Service Life: High-Performance Hydraulic Seal. No Damage to the Seal, after Several Hundred Uses – No need to buy Spare Kits!
- Extra-Long Nozzle. Ideal for Use in reaching Recessed and Hard-to-Reach Fittings.

- Quick & Simple Connection. Proprietary Locking & Quick-Release Mechanism, the Coupler Locks-On and Creates a Leak-Proof Seal. Innovative Design enables Quick-Release Coupler to firmly latch onto the Grease Fitting, enabling Hands-Free Greasing.
- No more Fighting and Struggling with Stuck-On Couplers. If a Fitting becomes Pressurized, just Depress the Thumb Lever and Release the Coupler.
- No more Broken-Off Fittings. No Spurts or Splashes when Disconnecting. The Waste and the Mess are Gone! A Clean Work Environment at all Times!
- Compact: 2.9" Length x 1.2" High.

Single-Hand Operation

Installation

Removal

- No more Tugging or Time Consuming Effort! No more Stuck Couplers - No Twisting, Yanking or using a Screwdriver to get it Off.
- Ergonomic Thumb Lever Design makes Coupling and Un-Coupling Effortless.

**Patented
Design**

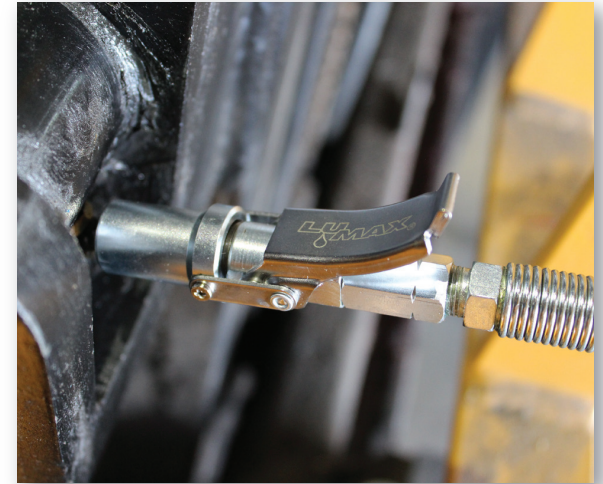


LX-1403-XL

- Compact: 5" Length x 1.2" High.

- Compatible with all Sizes and Forms of Mounts. Fits all SAE and Metric Grease Fittings.

Hands-Free Operation



Ideal for Use in Tight Spaces

